

Instructions to access ComTrader

In order to connect to M7 Trading SIMU OPCOM you must access the following address in your web browser <https://m7trading-test.deutsche-boerse.com/xrpm-simu/> (See picture bellow)

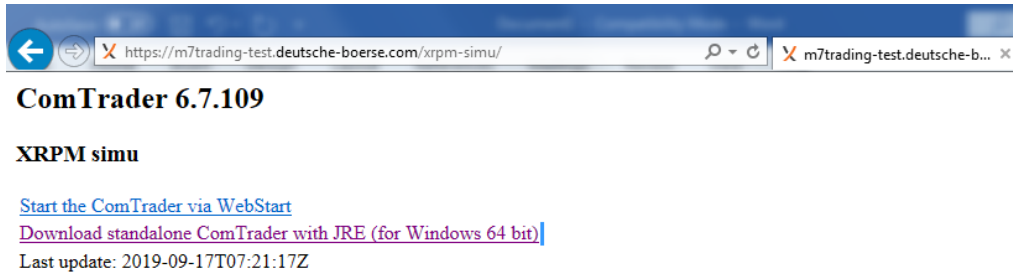


Figure 1

In this page you have two options to start the application.

In the first one you can access the ComTrader via WebStart as shown bellow:

Click **Start the ComTrader via WebStart** (! in this scenario you must have the latest version of Java !)

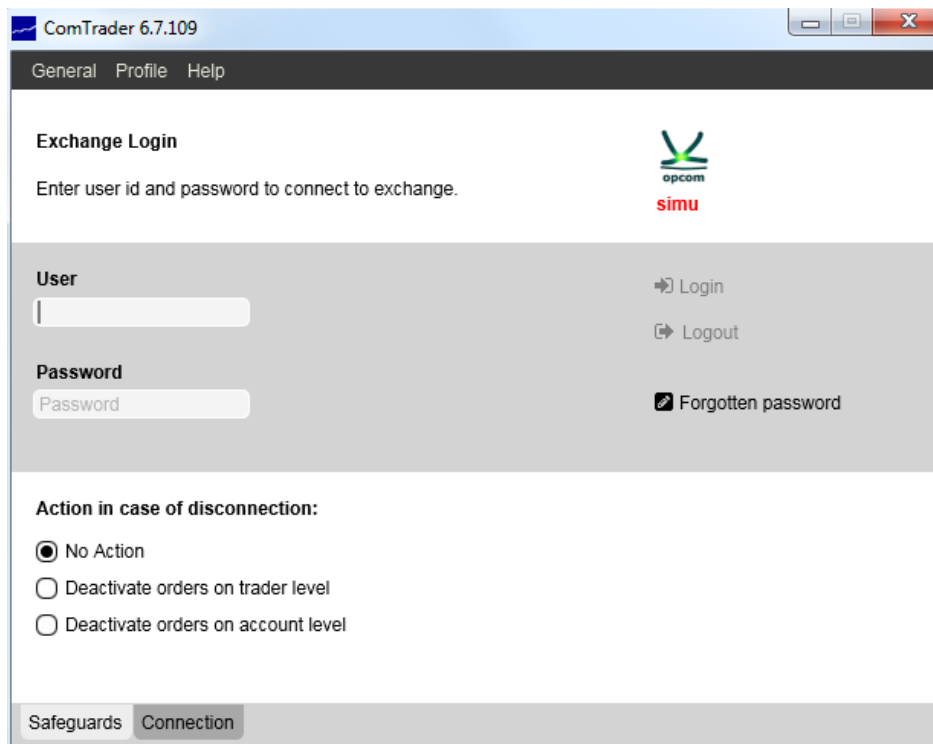


Figure 2

You must fill the empty boxes with User and Password provided by OPCOM.

If you are behind a proxy you must click on the Connection tab located in bottom left of the window and enter your proxy details. (See picture bellow)

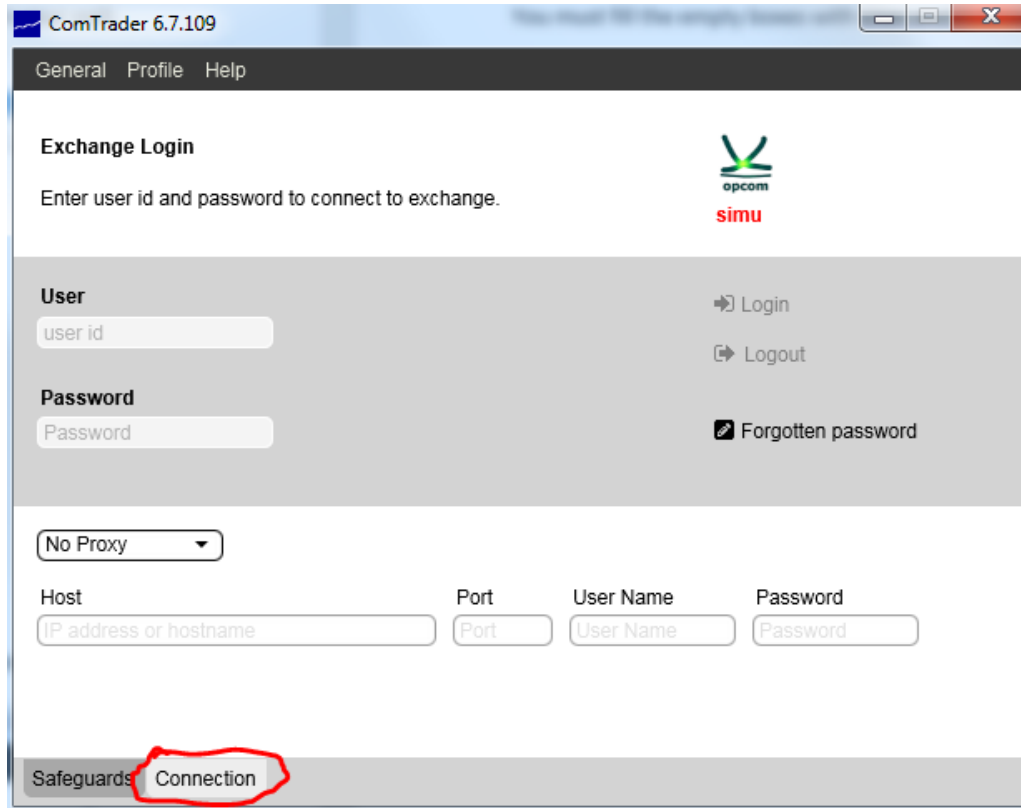


Figure 3

The second option is to **Download standalone ComTrader with JRE (for Windows 64 bit)**.

Click **Download standalone ComTrader with JRE (for Windows 64 bit)**. You will be prompted by a pop-up to save the archive to your Computer.

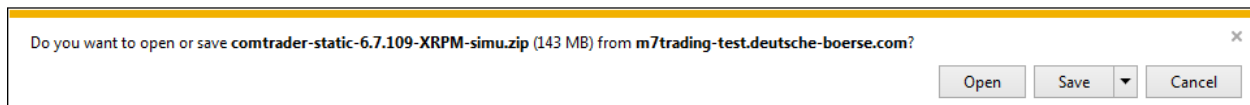


Figure 4

After that you need to extract the archive as shown bellow.

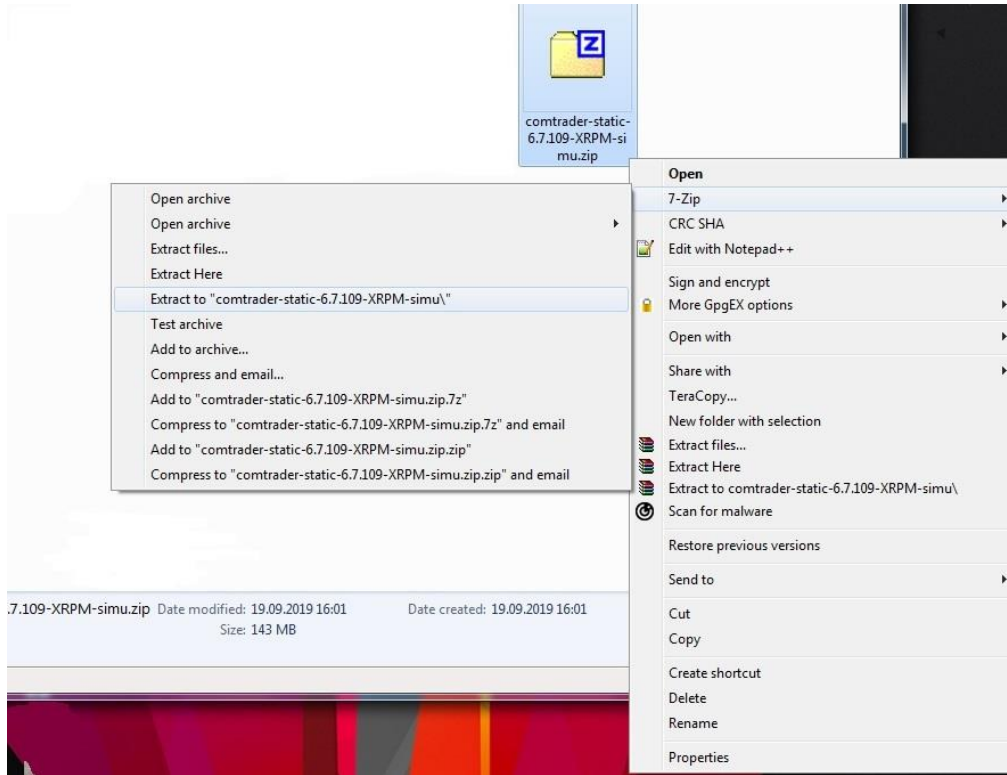


Figure 5

Access the **comtrader-static-6.7.109-XRPM-simu** folder and double click **ComTrader-6.7.109-4G-XRPM-simu.exe** (Figure 6)

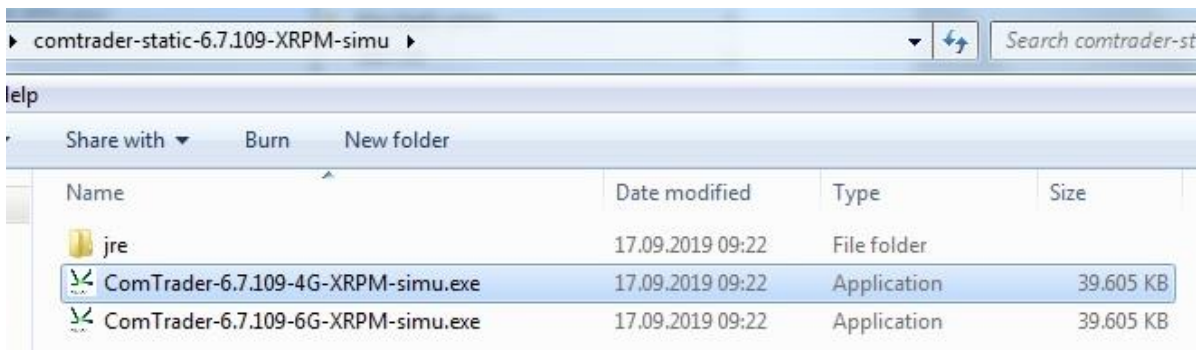


Figure 6

You must fill the empty boxes with User and Password provided by OPCOM.

If you are behind a proxy you must click on the Connection tab located in bottom left of the window and enter your proxy details. (See picture below)

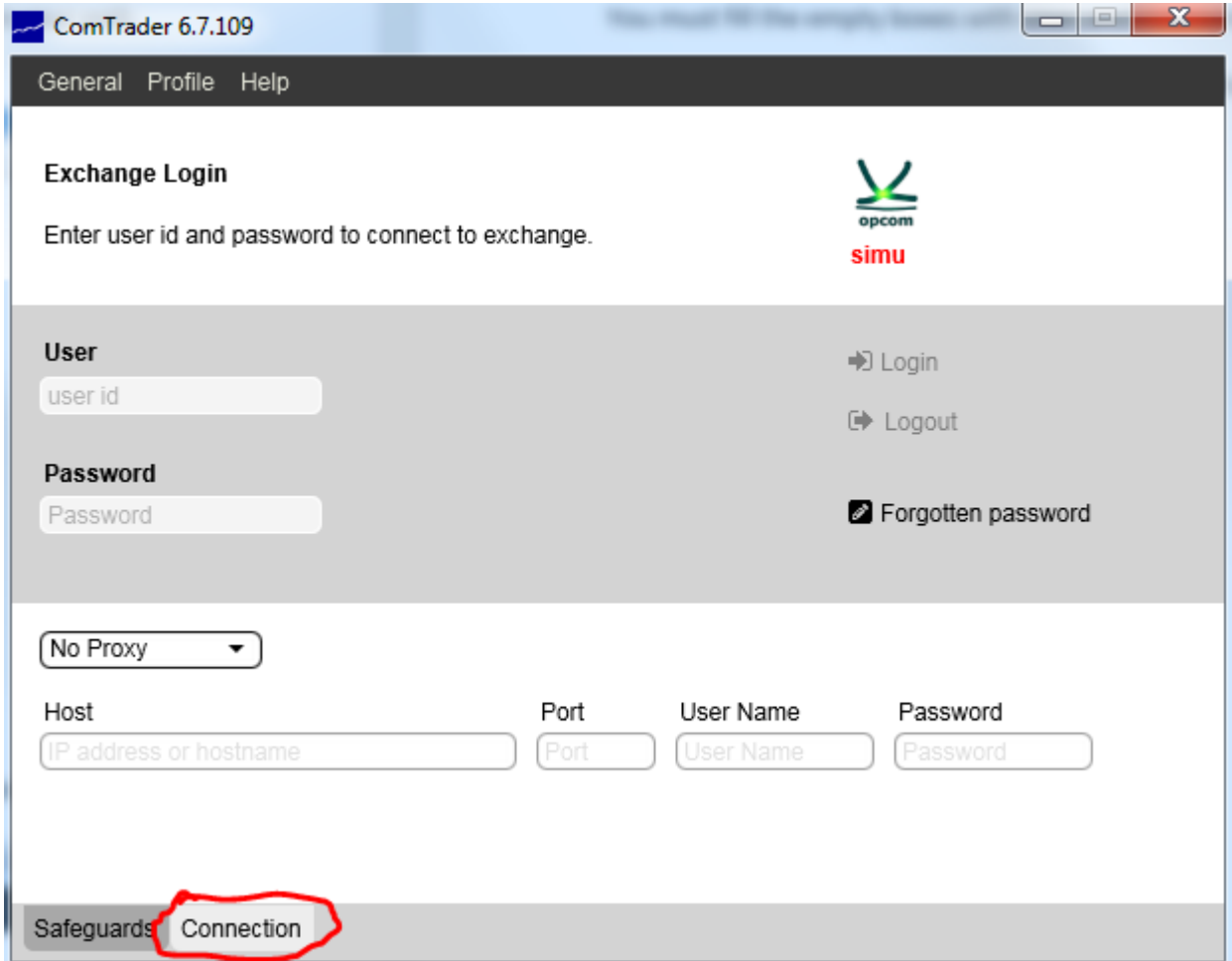


Figure 7

All trading related activities are documented in XML reports which are generated based on data of the M7 Trading SIMU OPCOM and can be downloaded via the WebGUI.

Reports are generated for report user who belongs to the market participant (member).

For ComTrader to run smoothly, you should also allow access to:

Servers exte1.profiles.m7.deutsche-boerse.com and exte2.profiles.m7.deutsche-boerse.com on port 60100 and

Servers simu1.opcom.m7.deutsche-boerse.com and simu2.opcom.m7.deutsche-boerse.com on port 50180.